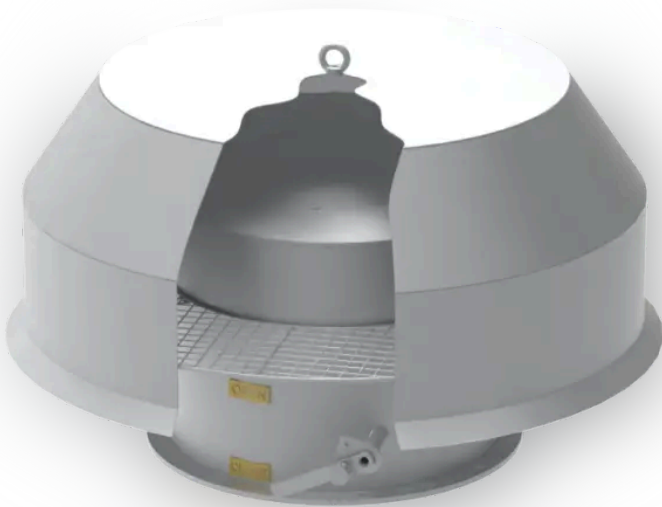


KHS – R10V

The KHS-R10V is a heavy-duty ventilation jet cowl for marine applications.



Standard sizes
250 – 1.000
mm

Summary

Design

Long experience has contributed to a simple and functional construction. The KHS-R10V is a jet cowl for upwards discharge of air.

Functional design protects against seawater spray and rain, with drainage.

It is available for duct sizes from ø250 til ø1000.

Execution

Normally manufactured in Grade A ship steel, hot dip galvanizes.

Can also be produced in other materials such as sea water resistant aluminium or stainless steel (AISI 304/316).

Gallery

